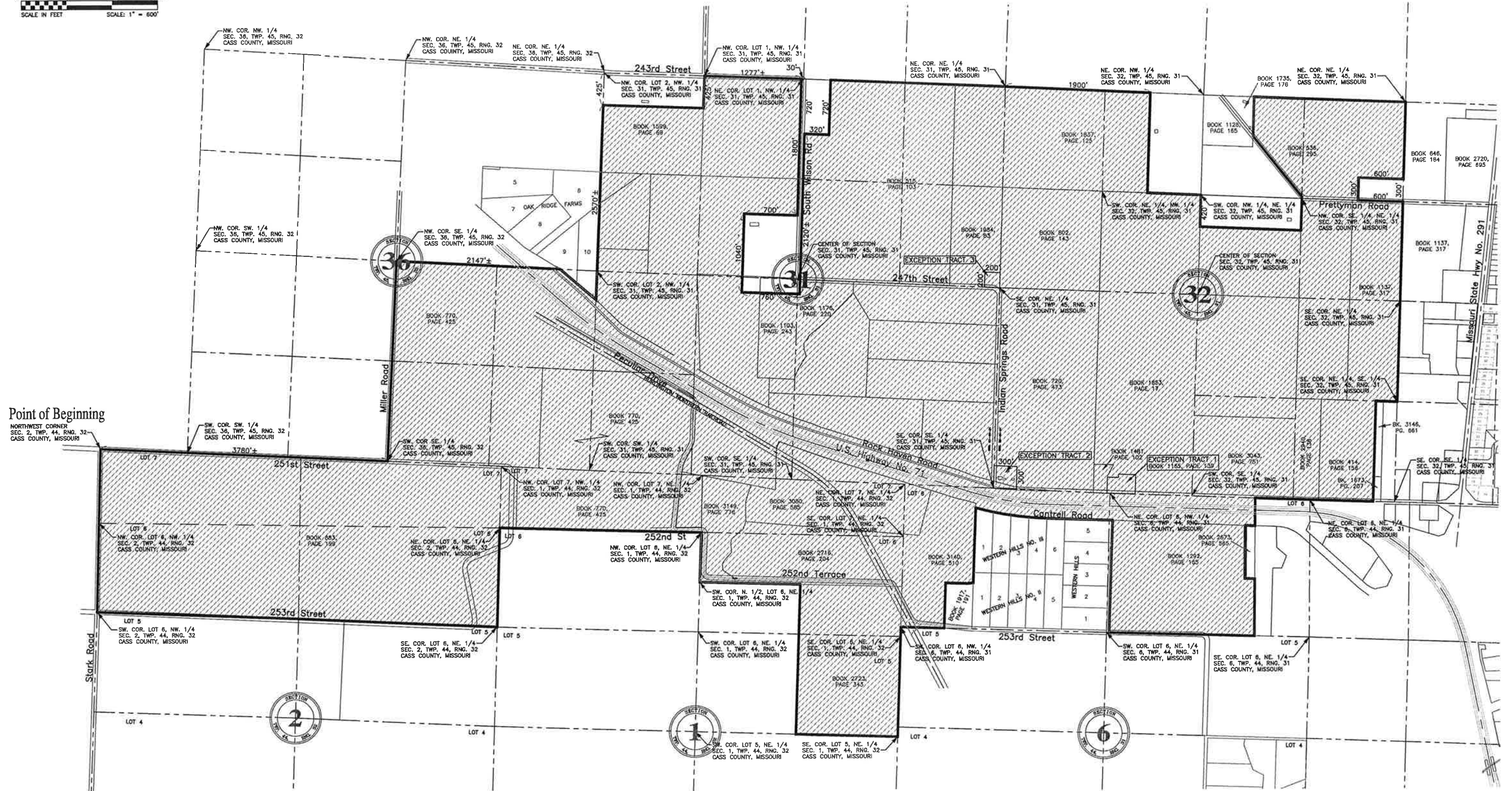


Hospital Interchange TDD Boundaries



600' 0 600' 1200'
SCALE IN FEET SCALE: 1" = 600'



Point of Beginning
NORTHWEST CORNER
SEC. 2, TWP. 44, RNG. 32
CASS COUNTY, MISSOURI

NOTE: THIS DRAWING DOES NOT CONSTITUTE A BOUNDARY SURVEY. IT IS FOR INFORMATIONAL PURPOSES ONLY. BOUNDARY CORNERS HAVE NOT BEEN FOUND OR SET.

FOR: CASS COUNTY, MISSOURI ORDERED BY: LEE MORRIS

BOWERS SURVEY COMPANY
ESTABLISHED 1962
110 SOUTH INDEPENDENCE P.O. BOX 71
HARRISONVILLE, MISSOURI 64701
PHONE (816) 380-4521
FAX (816) 380-4635

SECTION	TOWNSHIP	RANGE	COUNTY	STATE	DATE	JOB NO.
2	44	31	CASS	MISSOURI	4/30/10	19927-10
31	44	31	CASS	MISSOURI		
32	44	31	CASS	MISSOURI		

DRAWN BY: GB CHECKED BY: